

Instruction manual

9450 c

9450 Sc



Printer and interface overview



Starting / shutting down the printer



Sending a job for printing



Modifying a job



Information on consumables
Replacing the consumables



Head cleaning



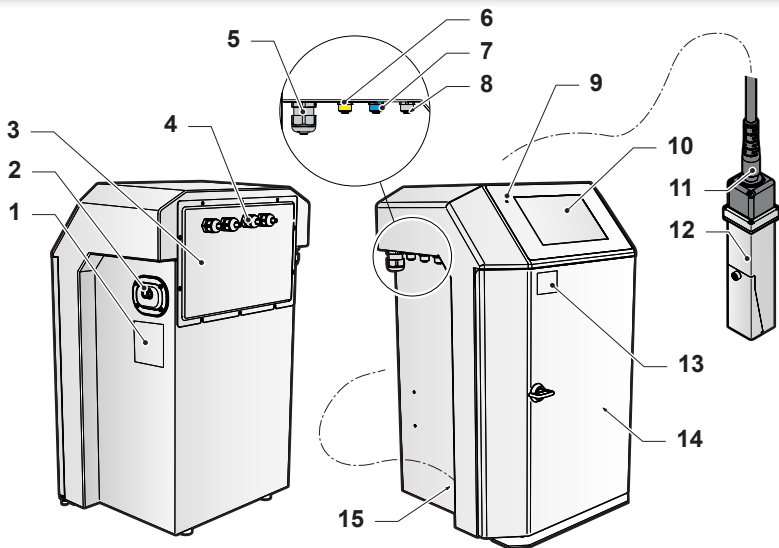
Troubleshooting -
Information



markem·image

a **DOVER** company

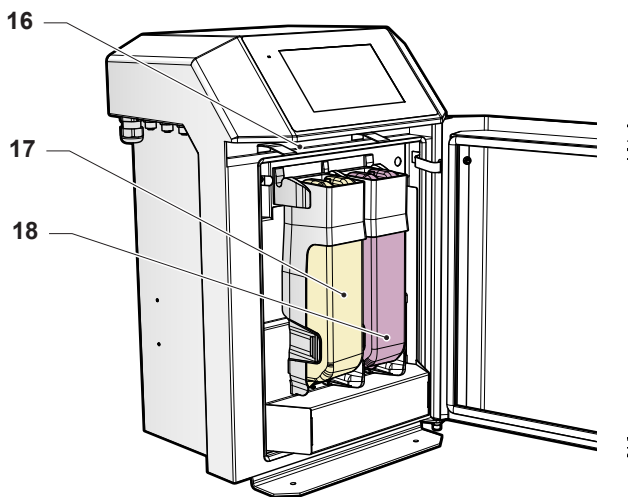
Printer overview



- 1 Manufacturer's plate
- 2 Power supply inlet
- 3 Access to the electrical compartment
- 4 Cable glands: other connections (Serial/Parallel Link)
- 5 Cable glands: Ethernet
- 6 Connection interface: Warning (yellow)
- 7 Connection interface: Encoder (blue)
- 8 Connection interface: Detection cell (black)
- 9 Power-On LED
- 10 Operator interface
- 11 Umbilical
- 12 Print head
- 13 Identification label (serial no.)
- 14 Hydraulics compartment
- 15 Plant air connector



Printer overview



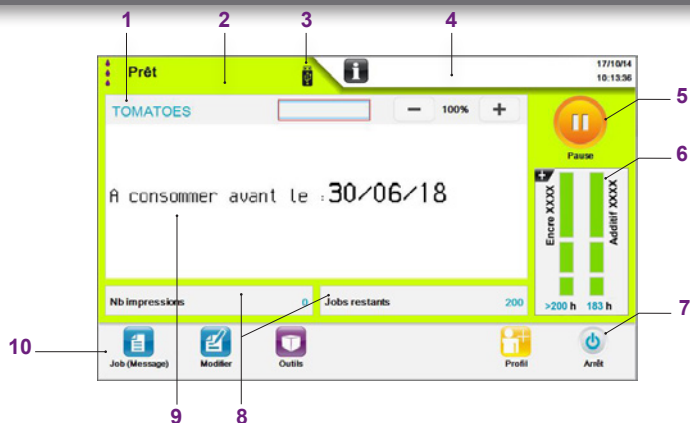
16 Air filter (model IP56)

17 Additive cartridge

18 Ink cartridge



Interface overview



1	Name of the job being printed	6	Time remaining indicator
2	Colored background. Printing status	7	Start/Stop printer
3	External equipment connection indicator	8	Production information
4	Colored bar. Printer information	9	Preview of the job being printed
5	Start/Pause printing	10	Icon bar



Printer reports



Consult operating information



Navigation window

16/10/14
10:03:46

Current date and time



Increase or decrease display size



Consult additional information about the consumables

Connection indicators:



Printer connected to the network



'Parent' printer



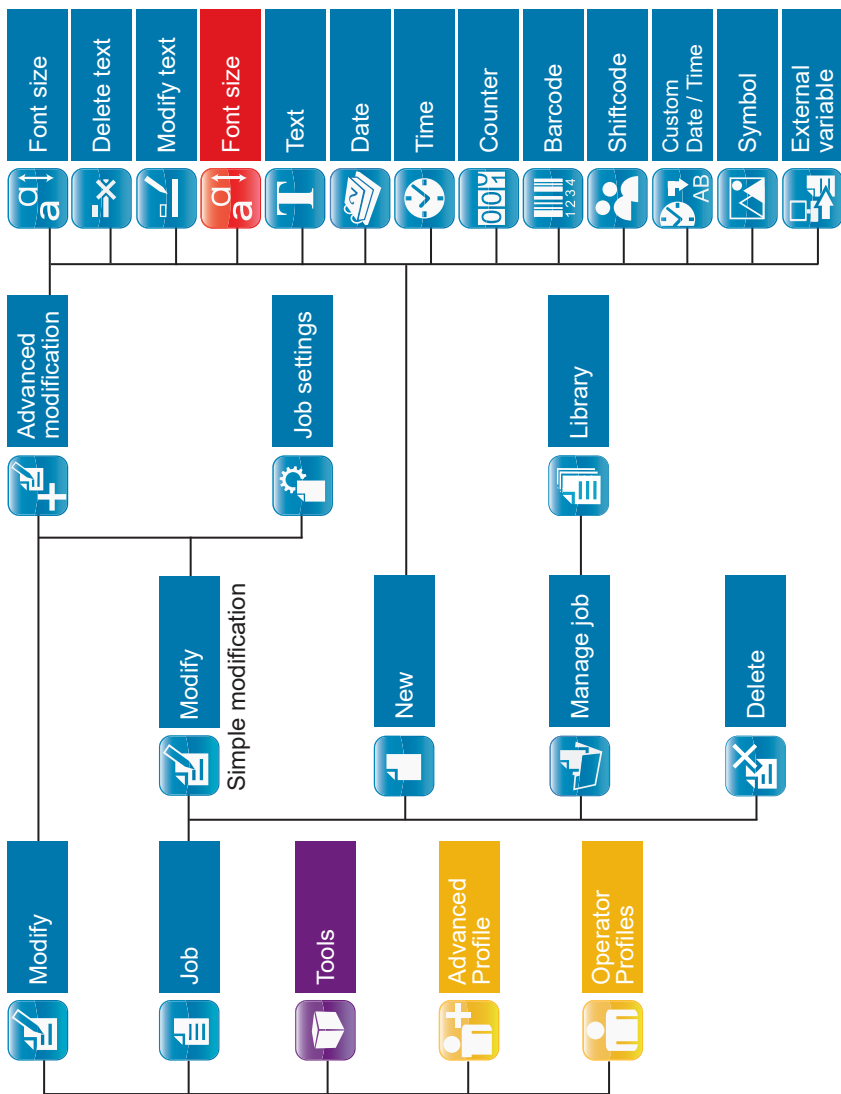
USB key connected



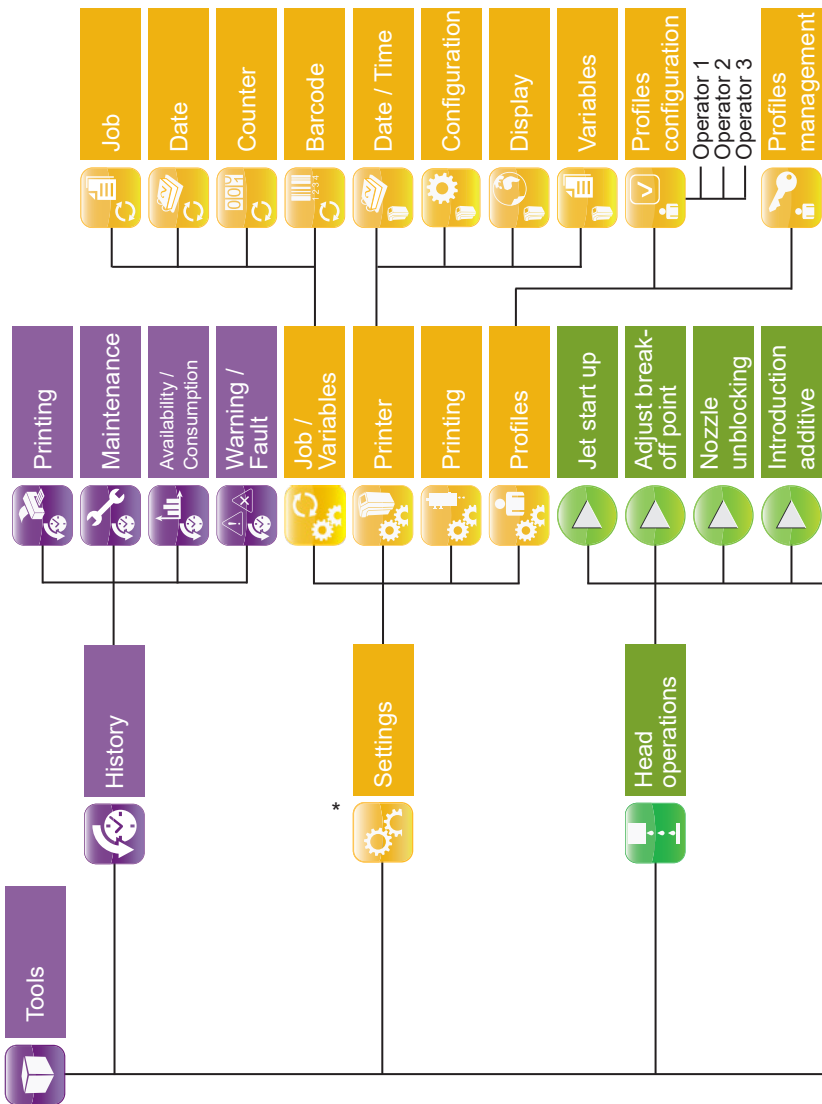
Camera reports (9450 option)



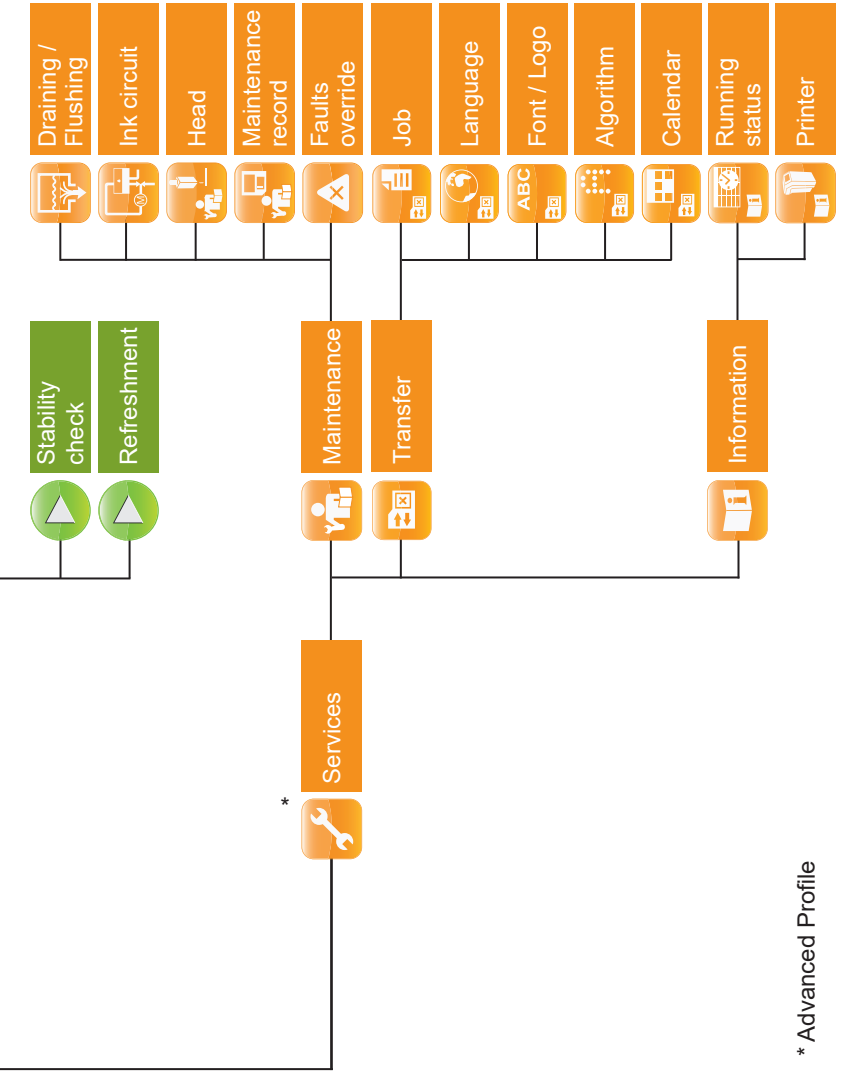
Presentation of the menus



Presentation of the menus



Presentation of the menus

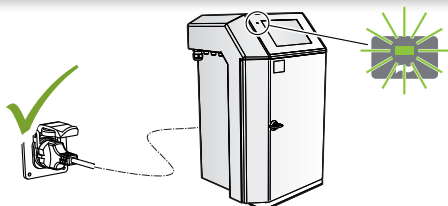


* Advanced Profile



Starting up the printer

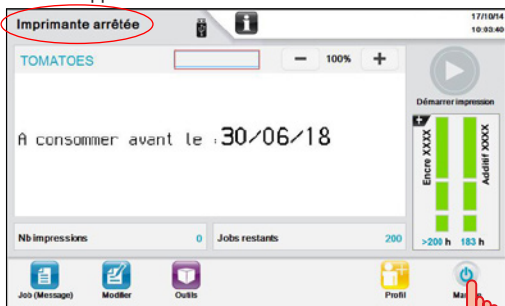
1



2



Printer stopped



3



Confirm printer start instruction.

Start-up in progress



Jet start-up in progress



Ready



Ready to print the 'Tomatoes' job displayed.



Shutting down the printer

1



2

Confirm printer stop instruction.

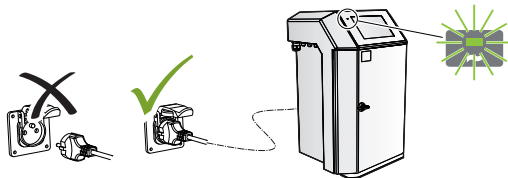
Jet stopped



Stopping



Printer stopped



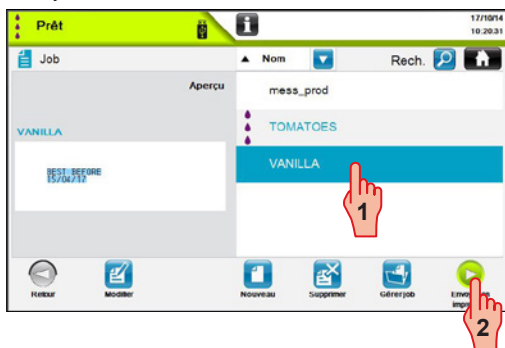
Sending a job for printing

1



2

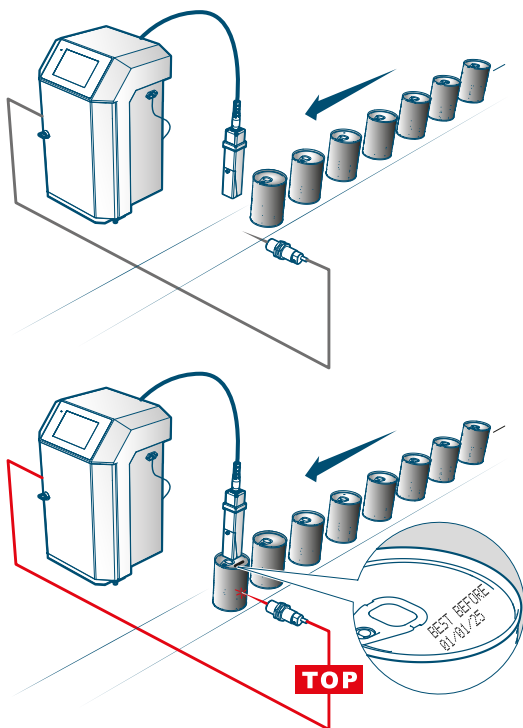
Ready



Ready



Sending a job for printing



Suspend printing:



Printing paused



Resume printing:



Confirm resume printing instruction

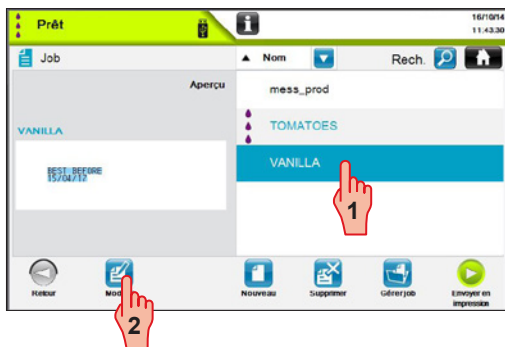


Modifying a job

1



2



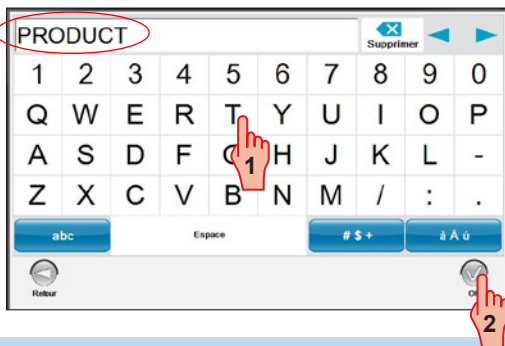
3

Modifiable fields



4

Text modified



Modifying a job

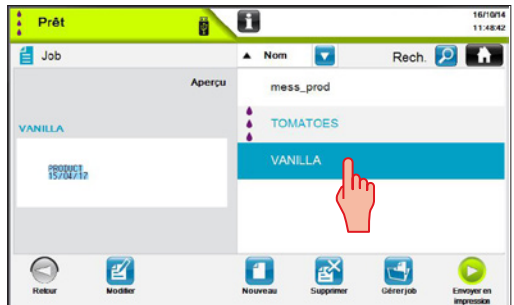
5



6

Confirm the modification.

7



Information on consumables

① Ink cartridge information area

② Additive cartridge information area

③ Ink/additive references detected

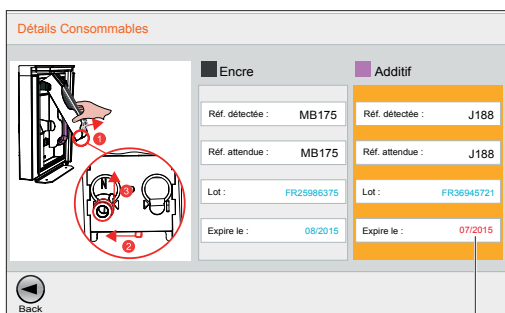
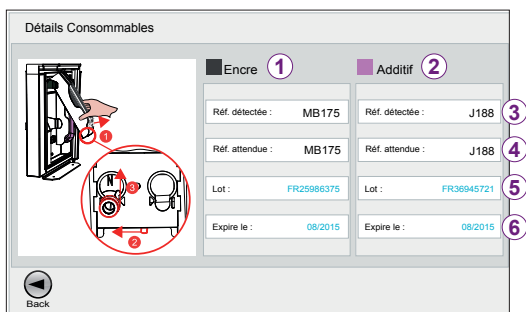
- Black text: OK
- Red text: bad cartridge
- Other text: the inserted cartridge is not a Markem-Imaje cartridge.

④ References expected by the printer

⑤ Cartridge batch number

⑥ Cartridge expiration date

- Blue text: OK
- Red text: out of date



out of date

If the printer detects a problem with any of the cartridges, the background turns orange.



Replacing the consumables

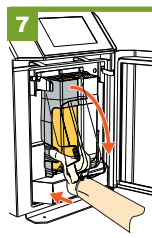
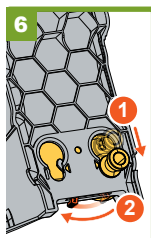
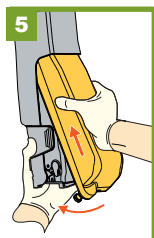
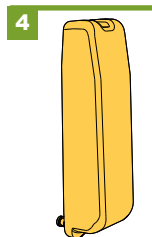
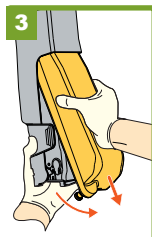
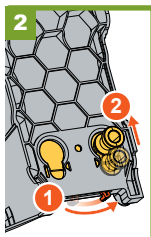
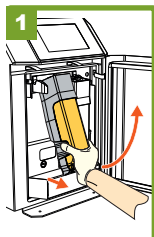
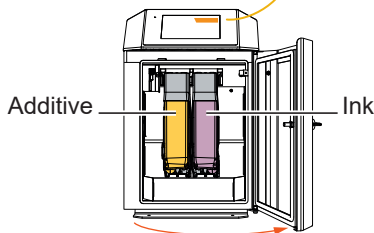
Only if:

Replace additive cartridge

Replace additive cartridge

Replace ink cartridge

Replace ink cartridge



After the new ink cartridge is inserted, it empties partially into the printer's internal tank.



WARNING

Risk of puncture

When replacing the cartridges, do not touch the nozzle.



Pigmented ink: Shake vigorously until the deposit disappears completely.

Only use Markem-Imaje consumables.



G Head cleaning



Ready

Prêt 17/10/14 10:13:36

Opérations sur la tête

Etat jet	Ecoulement	Référence viscosité (g)	25.0
Vitesse jet (mm)	20	Viscosité (g)	25.6
Pression (bars)	3.05	Niveau de récupération	0
Vitesse moteur (tr/min)	1500	Valeur piezo	260
Température encre (°C)	01	Numéro phase active	0
Température tête (°C)	61	Niveau d'encre (mm)	10
Compteur machine (h)	4	Compteur circuit d'encre (h)	0
Remplacement kit fibre	24 / 09 / 2013	Remplacement kit maintenance (h)	14638

Arrêt Débrancher base Intro adhésif Contrôle stabilité Rafraîchir Ajuster point de ligne OK

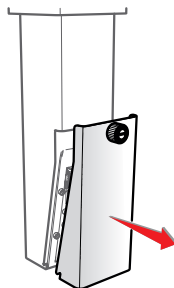
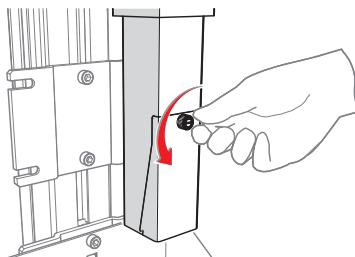
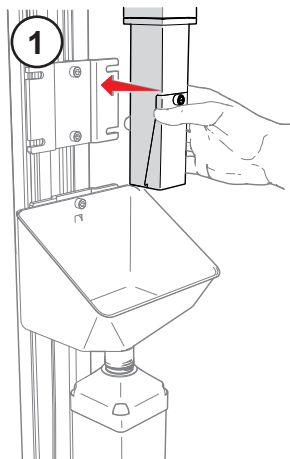


Jet stopped

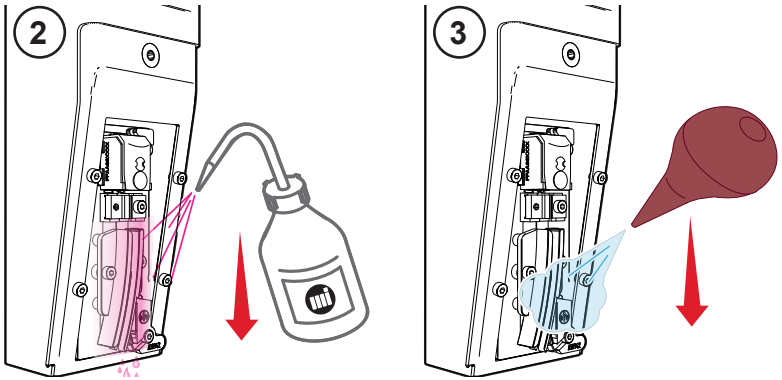
Jet arrêté 23/04/15 10:36:28



Only use Markem-Imaje cleaning fluid.



G Head cleaning



Jet stopped

Jet arrêté

Opérations sur la tête

Etat jet	Arrêté	Référence viscosité (s)	2
Vitesse jet (m/s)	0	Viscosité (s)	2
Pression (bars)	3.05	Niveau de récupération	
Vitesse moteur (tr/min)	1500	Valeur piezo	260
Température encre (°C)	29	Numéro phase active	0
Température tête (°C)	39	Niveau d'encre (mm)	100
Compteur machine (h)	1	Compteur circuit d'encre (s)	0
Remplacement kit filtre	24 / 09 / 2013	Remplacement kit maintenance (s)	14638

Démarrage (1) Débouçage base Intro. additif Contrôle stabilité Rafraîchissement Ajouter point de brassement OK (2)



Ready

Prêt

17/0014 10:13:36

When using certain inks or operating the printer in harsh environments (hot and/or dusty environments), you will need to clean the head thoroughly. See user manual or Sheet A47081.



M Head cleaning



Ready

Prêt 17/10/14 10:13:36

Opérations sur la tête

Etat jet	Ecouement	Référence viscosité (s)	25.0
Vitesse jet (m/h)	20	Viscosité (s)	25.6
Pression (bars)	3.05	Niveau de récupération	0
Vitesse moteur (tr/min)	1500	Valeur piezo	250
Température encres (°C)	01	Numéro phase active	0
Température tête (°C)	61	Niveau d'encres (mm)	10
Complex machine (h)	4	Complex circuit d'encres (h)	0
Remplacement kit fibre	24 / 09 / 2013	Remplacement kit maintenance (h)	14638

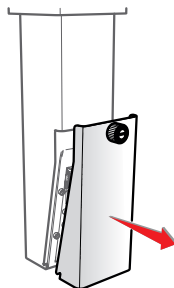
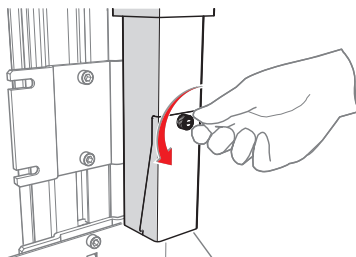
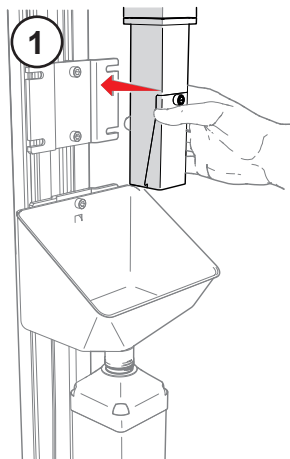
Arrêt Déroulage buse Intro. additif Contrôle Stabilité Rafraichissement Ajuster point de tirage OK

Jet stopped

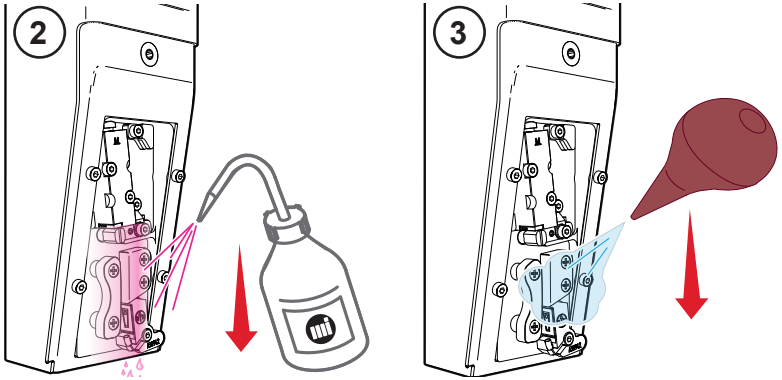
Jet arrêté 23/04/15 10:36:28



Only use Markem-Imaje cleaning fluid.



M Head cleaning



Jet stopped

Jet arrêté

Opérations sur la tête

État jet	Arrêté	Référence viscosité (s)	2
Vitesse jet (m/s)	0	Viscosité (s)	2
Pression (bars)	3.05	Niveau de récupération	
Vitesse moteur (tr/min)	1500	Valeur piezo	260
Température encre (°C)	29	Numéro phase active	0
Température tête (°C)	39	Niveau d'encre (mm)	100
Compteur machine (h)	1	Compteur circuit d'encre (s)	0
Remplacement kit filtre	24 / 09 / 2013	Remplacement kit maintenance (s)	14638

Démarrage 1 Débouçage base Intro. additif Contrôle stabilité Rafraîchissement Ajouter point de brassement OK 2



Ready

Prêt

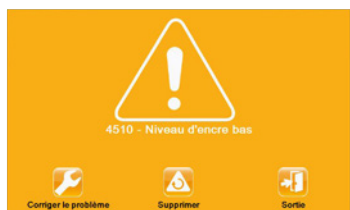
17/01/14 10:13:36

When using certain inks or operating the printer in harsh environments (hot and/or dusty environments), you will need to clean the head thoroughly. See user manual or Sheet A47081.



Troubleshooting

Alarm



Fault: printing not possible



Consult the troubleshooting screens (if available)



Acknowledge the fault or alarm



Acknowledge all faults and alarms



Information for machines equipped with a light beacon (blue, yellow, green):

- The **green** light indicates normal conditions.
- The **blue** light indicates a condition that requires operator action.
- The **yellow** light indicates an abnormal condition, the emergence of a critical condition.

S/N: Serial number: _____

Additive ref.: _____

Ink Ref.: _____



For Marking & Coding Equipment. Photographs and drawings are not binding in detail. This document was originally written in French. The French text of this document shall alone be authentic and shall prevail in the event of a dispute. Markem-Imaje reserves the right to modify the specifications of its products without prior notice. Any reproduction, even partial, of this document is prohibited.

© 2019 Markem-Imaje All Rights Reserved. English version





markem·imaje

a **DOVER** company

Redefine the possiblesm

User Documentation

Markem-Image Industries
9, rue Gaspard Monge
26500 BOURG-LES-VALENCE
France
tel 33 (0)4 75 75 55 00

www.markem-imaje.com

A50739-AC 11/2019

en